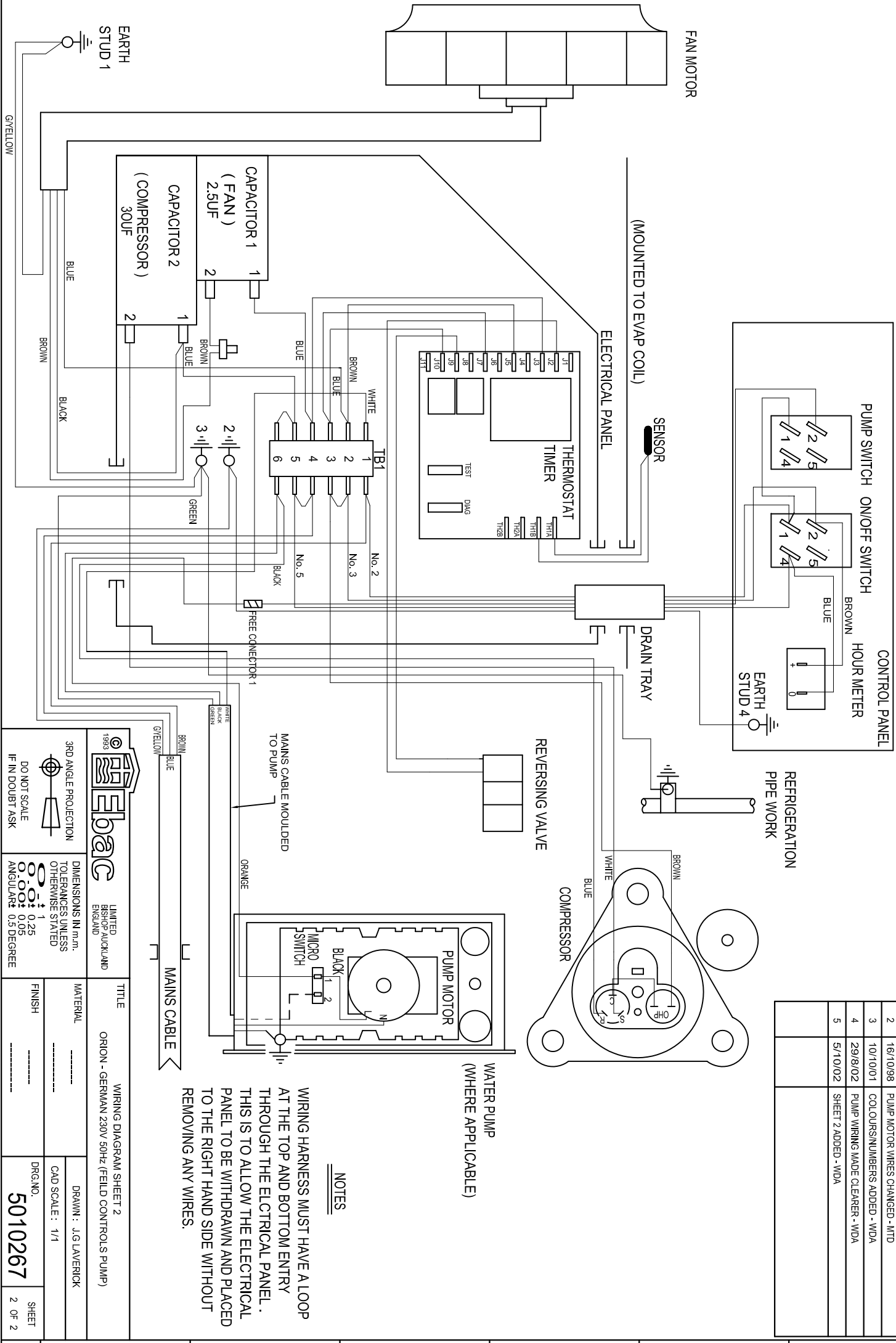


VIEWED FROM THE WIRING SIDE



ISSUE	DATE	AMENDMENTS
1	12/05/98	ORIGINAL
2	16/10/98	PUMP MOTOR WIRES CHANGED - MTD
3	10/10/01	COLOURS/NUMBERS ADDED - WDA
4	29/8/02	PUMP WIRING MADE CLEARER - WDA
5	5/10/02	SHEET 2 ADDED - WDA

NOTES

WIRING HARNESS MUST HAVE A LOOP AT THE TOP AND BOTTOM ENTRY THROUGH THE ELECTRICAL PANEL. THIS IS TO ALLOW THE ELECTRICAL PANEL TO BE WITHDRAWN AND PLACED TO THE RIGHT HAND SIDE WITHOUT REMOVING ANY WIRES.

ebac LIMITED
BUSINESS AUCKLAND
ENGLAND

3RD ANGLE PROJECTION
DO NOT SCALE
IF IN DOUBT ASK

DIMENSIONS IN mm.
TOLERANCES UNLESS OTHERWISE STATED

ANGULAR ± 0.5 DEGREE

TITLE
ORION - GERMAN 230V 50Hz (FIELD CONTROLS PUMP)

WIRING DIAGRAM SHEET 2

MATERIAL

FINISH

DRG. NO. **5010267**

SHEET 2 OF 2

DRAWN: J.G. L'AMERICK

CAD SCALE: 1/1