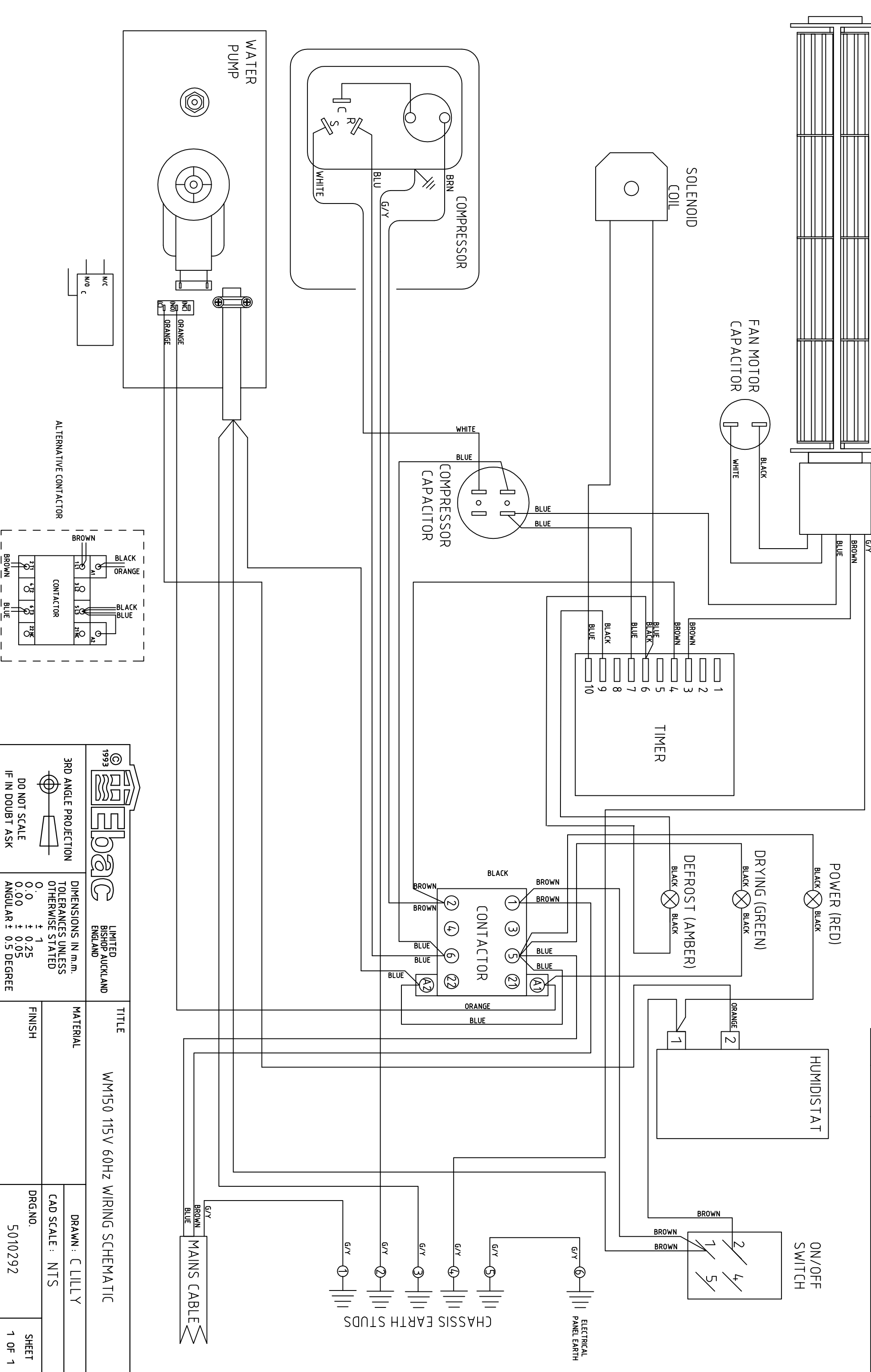



ISSUE	DATE	AMENDMENTS
1	15/06/07	ORIGINAL
2	06/05/08	ALTERNATIVE CONTACTOR ADDED - WDA
3	12/05/08	PUMP MICROSWITCH DRW ADDED - WDA
4	03/06/08	PUMP WIRING AMENDED - WDA




**LIMITED**  
 BISHOP AUCKLAND  
 ENGLAND

**TITLE**  
 WM150 115V 60HZ WIRING SCHEMATIC

**MATERIAL**  
 DRAWN: C LILLY  
 CAD SCALE: NTS

**FINISH**  
 DRG.NO. 5010292  
 SHEET 1 OF 1

DIMENSIONS IN m.m.  
 TOLERANCES UNLESS OTHERWISE STATED  
 ± 1  
 ± 0.25  
 ± 0.05  
 ANGULAR ± 0.5 DEGREE

3RD ANGLE PROJECTION  
 DO NOT SCALE  
 IF IN DOUBT ASK

**ALTERNATIVE CONTACTOR**

